



RETROFIT LED FUEL PRICE DISPLAYS



BEFORE

AFTER

APPEARANCE

This improves the store's image while enhancing visibility and increasing store traffic.

- Standard digit heights are available from 8"-24"
- Multi-stroke seven segment digits
- Automatic brightness adjustment

INSTALLATION

Revolutionary designs allows for quick & easy installation!

- 1.5" super-slim profile and ultra light construction
- Installs into existing changeable copy tracks with little or no refitting
- Reduce installation time and expense
- Mount onto existing signs or into new builds
- Versatile mounting options:
 - Pylon
 - Canopy
 - Monument
 - Billboard



CONVENIENCE

Immediate price change with handheld wireless remote

- Remote control with simple, single button operation
- Control up to 8 displays with one remote
- Reduce liability concerns from manual price changing
- Station employees no longer endure the weather to change prices
- Store is never left unattended

VERSATILITY

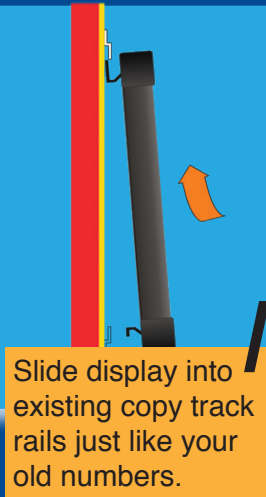
Gas-Trac offers more than fuel pricing!

- Create an image standard for multiple locations
- Displays available in red, amber, or green
- Multiple formats available: standard, condensed, & international liter
- Link additional displays with ease

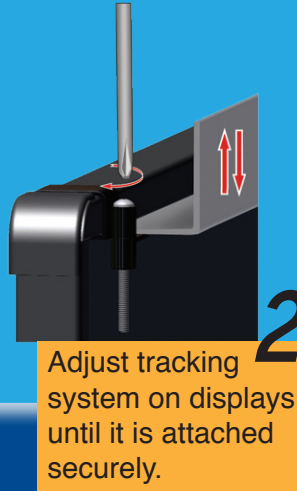


COMPONENTS & INSTALLATION

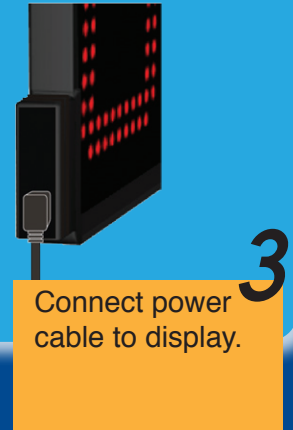
3 Easy Steps to Install



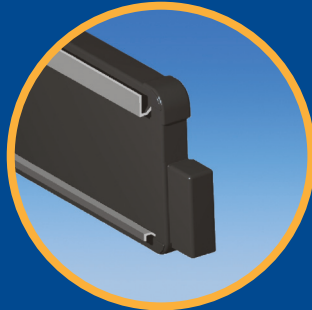
Slide display into existing copy track rails just like your old numbers.



Adjust tracking system on displays until it is attached securely.



Connect power cable to display.



REVOLUTIONARY Adjustable Tracking System

Ultra-Thin 1.5" Profile

Durable Lexan Face

Superbright LED's
140° viewing angle



Weather-tight Construction

UV Resistant Plastic Housing



Handheld Wireless Remote

Gas-Trac incorporates a handheld wireless remote with a communication range of 300 feet (92 meters). This allows for one-button operation of up to 8 different price displays.



STANDARD	Model	Digit Height	LED Stroke	Cabinet Size L x H x D (in)	Weight (lbs)	Watts
	GTX-8	8"	2	30 x 9.875 x 1.5	6	36
	GTX-10	10"	2	34 x 11.875 x 1.5	9	36
	GTX-12	12"	2	40 x 13.875 x 1.5	12	36
	GTX-15	15"	3	49 x 16.875 x 1.5	16	51
	GTX-18	18"	3	56.75 x 19.875 x 1.5	20	69
	GTX-21	21"	3	58.5 x 22.875 x 1.5	23	64
	GTX-24	24"	3	63.5 x 25.875 x 1.5	26	71



FULL 9/10	Model	Digit Height	LED Stroke	Cabinet Size L x H x D (in)	Weight (lbs)	Watts
	GTX-8910	8"	2	30 x 9.875 x 1.5	6	36
	GTX-10910	10"	2	34 x 11.875 x 1.5	9	36
	GTX-12910	12"	2	40 x 13.875 x 1.5	12	36
	GTX-15910	15"	3	49 x 16.875 x 1.5	16	51
	GTX-18910	18"	3	56.75 x 19.875 x 1.5	20	69
	GTX-21910	21"	3	58.5 x 22.875 x 1.5	23	64
	GTX-24910	24"	3	63.5 x 25.875 x 1.5	26	71



CONDENSED	Model	Digit Height	LED Stroke	Cabinet Size L x H x D (in)	Weight (lbs)	Watts
	GTX-8C	8"	2	27.5 x 9.875 x 1.5	6	36
	GTX-10C	10"	2	31.5 x 11.875 x 1.5	9	36
	GTX-12C	12"	2	37.5 x 13.875 x 1.5	12	36
	GTX-15C	15"	3	45 x 16.875 x 1.5	16	51
	GTX-18C	18"	3	52.75 x 19.875 x 1.5	20	69
	GTX-21C	21"	3	54.5 x 22.875 x 1.5	23	64
	GTX-24C	24"	3	59.5 x 25.875 x 1.5	26	71



LITER	Model	Digit Height	LED Stroke	Cabinet Size L x H x D (in)	Weight (lbs)	Watts
	GTX-8L	8"	2	33 x 9.875 x 1.5	6	36
	GTX-10L	10"	2	38.5 x 11.875 x 1.5	9	36
	GTX-12L	12"	2	44.875 x 13.875 x 1.5	12	36
	GTX-15L	15"	3	56 x 16.875 x 1.5	16	51
	GTX-18L	18"	3	64 x 19.875 x 1.5	20	69
	GTX-21L	21"	3	64.5 x 22.875 x 1.5	23	64
	GTX-24L	24"	3	69 x 25.875 x 1.5	26	71

* Replace the "X" in model number with "R" for red, "G" for green, or "A" for amber.

TEXT DISPLAYS



STATIC & ALTERNATING

Gas-Trac text displays are the perfect compliment to Gas-Trac displays. These units are available in static or alternating formats, allowing up to two pre-specified messages. Light up your fuel grades, advertise Cash/ Credit pricing, and communicate with your customers using Gas-Trac text displays.

Model	Character Height	Max Characters	Cabinet Size L x H x D (in)	Weight (lbs)	Watts
GTX-CC48	4"	8	30.375 x 6.25 x 1.5	3	8
GTX-CC410	4"	8	34.875 x 6.25 x 1.5	4	8
GTX-CC412	4"	8	40.5 x 6.25 x 1.5	5	8
GTX-CC715	7"	8	48.5 x 9.25 x 1.5	8	19
GTX-CC718	7"	8	56.625 x 9.25 x 1.5	9	19
GTX-CC721	7"	8	58.875 x 9.25 x 1.5	10	19
GTX-CC724	7"	8	63.375 x 9.25 x 1.5	11	19

* Replace the "X" in model number with "R" for red, "G" for green, or "A" for amber.

LED Viewing Angle	140°
LED Rating	100,000+ hours
LED Colors Available	Red = 630nm; Amber = 592nm; Green = 525nm
Display Configuration	Single- or Double-sided
Special Features	Automatic Brightness Adjustment Non-volatile memory (stores last price displayed)
Communications	Handheld wireless remote (300+ ft/ 91+ m Range)
Operating Voltage	120- 220 Volts AC
Operating Temperature	-40° to 122° F/ -40° to 50° C
Product Approval	FCC Compliant
Safety Listing	NSF
Cabinet Materials	UV Resistant PVC/ ABS Cabinet UV Resistant Protective Lexan Face
Cabinet Color	Black
Warranty	Three-year factory warranty

PYLON SIGNS

Gas-Trac easily mounts to z-rails on new or existing pylon signs. Designed for convenient installation, Gas-Trac upgrades a sign from manual to electronic signage without the cost of replacing the entire face of the sign.



MONUMENT

Gas-Trac is ideal for monument signs where access to the back of the sign may be restricted. Because all installation is limited to the exterior of the signage, the slim design of Gas-Trac is a great addition to any monument sign.

CANOPY INSTALLATION

Gas-Trac displays make vibrant, eye-catching additions to canopy fascias. Displays mount much the same way as standard pylon installations, with the simple addition of a Canopy Extension Kit.

Kits include an additional power control box and communication cable. This configuration allows all prices to be controlled quickly and efficiently using one Gas-Trac handheld wireless remote.

