

# KleeBlue™

Your Total DEF Storage & Dispensing Equipment Solution



## Fleet Fueling Island-Friendly Mini-Bulk Systems

400 & 1000 gallon



# KlerBlue Fleet Fueling Island-Friendly Systems

## 400 & 1000 Gallon Mini-Bulk Turn-Key Solutions

Since 2010 EPA NOx standards came into effect, most new diesel vehicles require DEF. For fleet managers, finding the right equipment to service these vehicles can be a daunting task. Luckily, KlerBlue has both the industry experience and engineering know-how to make this easy. KlerBlue offers several systems tailored to schools, municipalities, trucking companies and other fleets depending on storage and dispensing capacity needed. Of those, KlerBlue's turn-key 400 & 1000 gallon mini-bulk systems are the quickest and simplest to install so you can begin dispensing DEF right away.

KlerBlue's all-in-one Fleet Fueling Island-Friendly systems stand out from other similar systems in the marketplace. Because DEF freezes at 12°F, it requires special insulation and heating considerations to ensure you can continue to service vehicles in the most extreme environments.

### Service Vehicles Even In Extreme Cold

Since DEF requirements have come into effect, KlerBlue's systems have proven to be the industry's most reliable, even during the harshest winters.

- Each system features 2 heaters controlled by an automatic thermostat - a primary heater and a backup heater in case of heating failure.
- R16 industrial-grade insulation on sides, bottom and top of tank is not only easier on the heaters, it ensures that even in the event of a power failure DEF will stay in liquid form for days. This means when power comes back on, you're ready to go. It also protects against extreme heat.

### Integrate Into Your Existing Operations

Don't spend extra money trying to make your DEF solution work with your current site infrastructure.

- Each KlerBlue mini-bulk system is engineered to fit on a standard fueling island.
- The included KlerBlue Apex fleet dispenser or optional commercial dispenser are designed to interface to your Fuel Management System (FMS).
- Optionally, the tank can supply a remote dispenser and/or a 3rd party dispenser.





## Protect Your Investment & Against Leaks

Thanks to our 25+ history in the oil & gas industry, we understand the beating your equipment can take between day-to-day wear-and-tear and harsh weather. That's why our equipment was engineered to withstand the most challenging environments.

- The tank design features mechanical overflow protection.
- Secondary containment design ensures even in the event of a leak, the liquid will stay between the inner and outer walls.
- The tough HDLPE polyethylene outer double wall is UV protected, corrosion proof, and impact resistant.
- Lockable ball valve in a lockable fill access compartment protects against possible DEF theft .
- The all-in-one nature of the system allows you to relocate the unit and/or resell it as DEF demand grows.

## Start Fueling SCR-Equipped Vehicles Quickly

Need a more efficient way of fueling your new diesel vehicles?

- Each system comes flushed, pre-wired and ready to install.
- An anchor kit is included to help secure the unit to the ground.
- The tank includes access points to allow a fork lift to put the unit in place.

## Optional Features

Need something other than the standard system? Consider these options:

- Replace standard tank gauge with a 3rd party aboveground tank gauge including (but not limited to) Veeder Root, Incon and Centuron.
- Swap out the standard blue tank color for tan color (1000 gallon unit only).
- And more! Call for details.

All KleeBlue's Fueling-Island Friendly Systems include an attached KleeBlue Apex dispenser.

To learn more about this product, ask your sales rep for a brochure, or find information online at [www.kleebluesolutions.com](http://www.kleebluesolutions.com).



# Need larger capacity than 1000 gallons?

Check out our 2000/2600 gallon and bulk tank solutions for fleets.

[www.KleerBlueSolutions.com](http://www.KleerBlueSolutions.com)

## Product Specifications



### Standards & Approvals:

- ISO 22241 - 3 & 4
- PEI RP1100
- CSA Listed - C22.2, U/L 508, ANSI/UL Std. No. 50
- Patent Pending



### Operating Temperature:

- -22°F/-30°C to 130°F/54°C



### Size & Dimensions:

- Fueling island friendly widths
- **400 gallon:** 38" width x 190" length x 68" height
- **1000 gallon:** 44" width x 190" length x 106" height
- Dimensions reflect standard lane-oriented affixed KleerBlue Apex dispenser



### Tank Containment:

- Triple wall containment
- Single wall polyethylene primary tank
- **Double wall HDLPE polyethylene containment shell:** UVB protected, corrosion proof and maintenance free
- True 400 & 1000 gallon capacities



### Insulation & Heating:

- Redundant heating
- R16 industrial-grade insulation on bottom, sides and top of tank
- **400 gallon:** 200 watt tank pad heaters
- **1000 gallon:** 450 watt immersion heaters
- Automatic Thermostat



### Electronics:

- Three 20 amp 115V AC circuits required
- Local digital readout tank gauge mounted weatherproof/corrosion proof enclosure displaying product volume
- Dispenser specifications can be found in respective dispenser brochure



### Pump:

- Submersible pump or optional manifolded submersible pumps
- No priming required
- Rated for 400,000 start/stop cycles
- Up to 18 GPM (recommended max per dispenser is 10 gpm)



### Security/Accident Prevention:

- Lockable fill access compartment
- 2" fill port with stainless locking valve located in sealed fill box
- Mechanical overfill prevention
- Electronics located outside of tank enclosure to eliminate vapor related problems
- Impact resistant outer tank & triple wall secondary containment
- Primary and secondary tank vents
- Dial thermometer in the fill access compartment for monitoring tank temperature
- **Option:** High & low temperature & product alarms
- **Option:** 3rd party aboveground tank gauge including (but not limited to) Veeder Root, Incon and Centuron



### Fill Inlets:

- 2" with ball valve and check valve
- **Option:** 2" stainless steel drybreak (Parker, OPW or TODO)
- Heated and insulated inlet plumbing



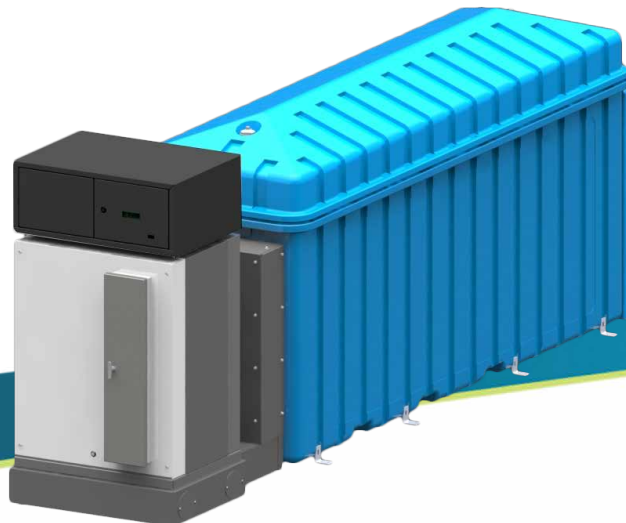
### Dispenser:

- KleerBlue Apex (as shown) comes standard
- Lane orientation is standard, Island orientation is optional
- **Option:** KleerBlue Apex (remote)
- **Option:** KleerBlue Commercial dispenser
- **Option:** 3rd Party dispenser(s) (attached or remote)



### Installation:

- Forklift compatible
- Pressure-tested before shipment
- Completely pre-piped and wired
- Anchor kit



# KleerBlue™